

# InvestEdge Analytics



Contact us for getting  
Indicator link & access

(whatsapp us to get access)

Website : [InvestEdgeAnalytics.com](https://InvestEdgeAnalytics.com)

WhatsApp No : +91 90999 12902

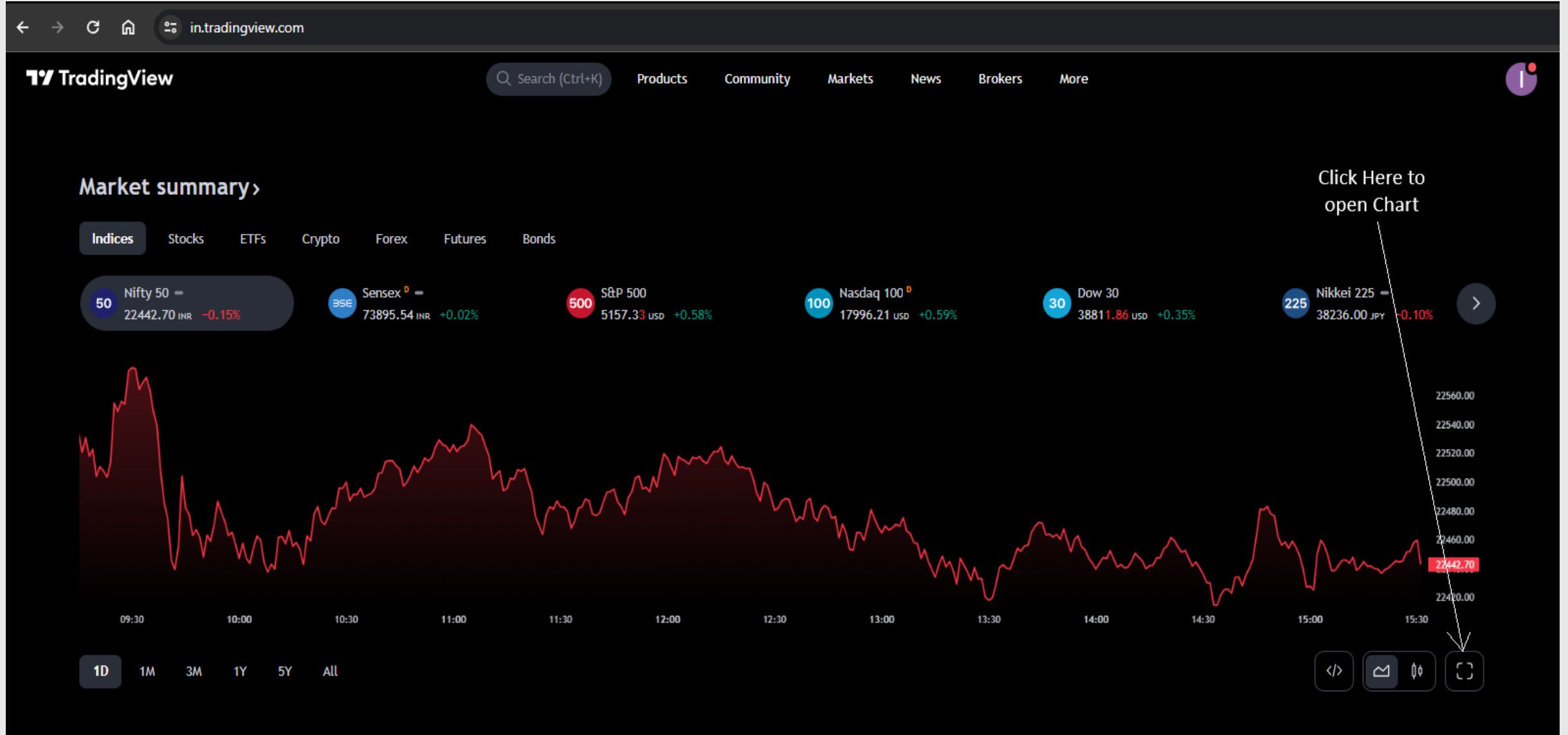
Email ID :

[InvestEdgeAnalytics@gmail.com](mailto:InvestEdgeAnalytics@gmail.com)



## [How to open and use Indicator](#)

After we give you access of Indicator, refresh your browser. Open <https://in.tradingview.com/> and get logged in. (its free). Then Do following steps



Q ICIL



1m

5m

15m

1h

D

W

M



Indicators



Alert



Replay



INDO COUNT INDUSTR · 1D · NSE ● O400.00 H404.00 L385.87 C391.30 -6.95 (-1.75%) Vol214.778K

391.30 0.50 391.80

Vol 214.778K

InvestEdge Analytics - Cash Stocks - Daily



Click here to search any Stock etc

Step - 1

### Indicators, Metrics & Strategies

Search

Favorites

Personal

Technicals

Financials

Community

Invite-only

Step - 2

SCRIPT NAME

InvestEdge Analytics - Cash Stocks - Daily

Step - 3

AUTHOR

InvestEdgeAn...

INR

420.00

400.00

391.30

01:22:24

380.00

360.00

340.00

320.00

300.00

280.00

260.00

240.00

220.00

200.00

180.00

160.00

140.00

120.00

100.00

80.00

214.778K



214.778K

# What will you get?

- Access Indicator to use in TradingView that will show you powerful zones from where stock can run like a bull.
- Access to screener to get list of stocks, price of which are in the powerful zones. So, you don't need to shuffle all the stocks manually. Moreover, scanner will get updated live. (optional)





The background features a close-up of a pen writing on a document. A line graph is visible, with a blue line showing an upward trend. The numbers '20', '25', and '2,47' are faintly visible on the graph. The overall tone is professional and analytical.

# How to use InvestEdge Analytics' Indicator

## **There are total 5 types of Entries.**

### **1. Short Term Entry – Yellow Arrow along with “S” written with it (Short Buy)**

In this entry, you will get “quick entries with small SL”.

You can catch good small - small moves easily.

Many times, it also gives big moves with small SL.

### **2. Break Out Entry – Blue Arrow along with “B” written with it (Most Famous)**

In breakout entry, “Target and SL would be bigger”.

Chances of getting big move is highly possible in this case.

## 3 type of Positional Entries [Trade of Short term to Medium term]

E.g. If you want to buy 900 shares of Reliance Infra

### Zone-1 – Green Arrow along with “1” written with it (Positional Buying)

This mean that you need to **buy 1/3<sup>rd</sup> quantity** within this zone.

E.g. Buy 300 shares if Entry “1” came. SL would be of Entry “1”

### Zone-2 – Purple Arrow along with “2” written with it (Positional Buy)

This mean that you need to **buy 1/3<sup>rd</sup> quantity again 2<sup>nd</sup> time** within this zone.

E.g. If price comes down, Entry “2” will get appear. Then again buy 300 shares.

SL of 1<sup>st</sup> 300 + 2<sup>nd</sup> 300 = Total 600 shares will be now SL of Entry “2”

### Zone-3 – Yellow Arrow along with “3” written with it (Positional Buy)

This mean that you need to **buy 1/3<sup>rd</sup> quantity again 3<sup>rd</sup> time** within this zone.

E.g. If price comes more down, Entry “3” will get appear. Then again buy 300 shares.

SL of 1<sup>st</sup> 300 + 2<sup>nd</sup> 300 + 3<sup>rd</sup> 300 = Total 900 shares will be now SL of Entry “3”

Note : Reason of making 3 part is to get benefit of falling price.  
Many times, price will go up directly from Zone-1 or Zone-2.  
So investing in every zone is necessary.



## **Important Notes:**

1. Do profit booking as per your own convenience.
2. Don't concentrate your trading basket in only one or two stocks, diversify your holding with multiple stocks to minimise risk and maximise profit.
- 3. Stop Loss should be taken only on Daily Closing Bases  
i.e if Daily candle closes below the SL then only you need to exit.**
4. Lower the entry you can catch within the zone, lower your SL will be.
5. Indicator is to be used for **cash stocks only in Daily Time Frame.**

# How indicator looks in trading view site



# How indicator looks in trading view site



# Explanation to indicator

